

INSTRUMENT DEPARTURE CHART - ICAO

DUNDEE  
RNP  
RWY 27  
(ACFT CAT A,B,C)

48  
090°

44  
270°

42  
090°

26  
270°

MSA 25NM NDB(L) DND

29  
090°

29  
270°

28  
090°

26  
270°

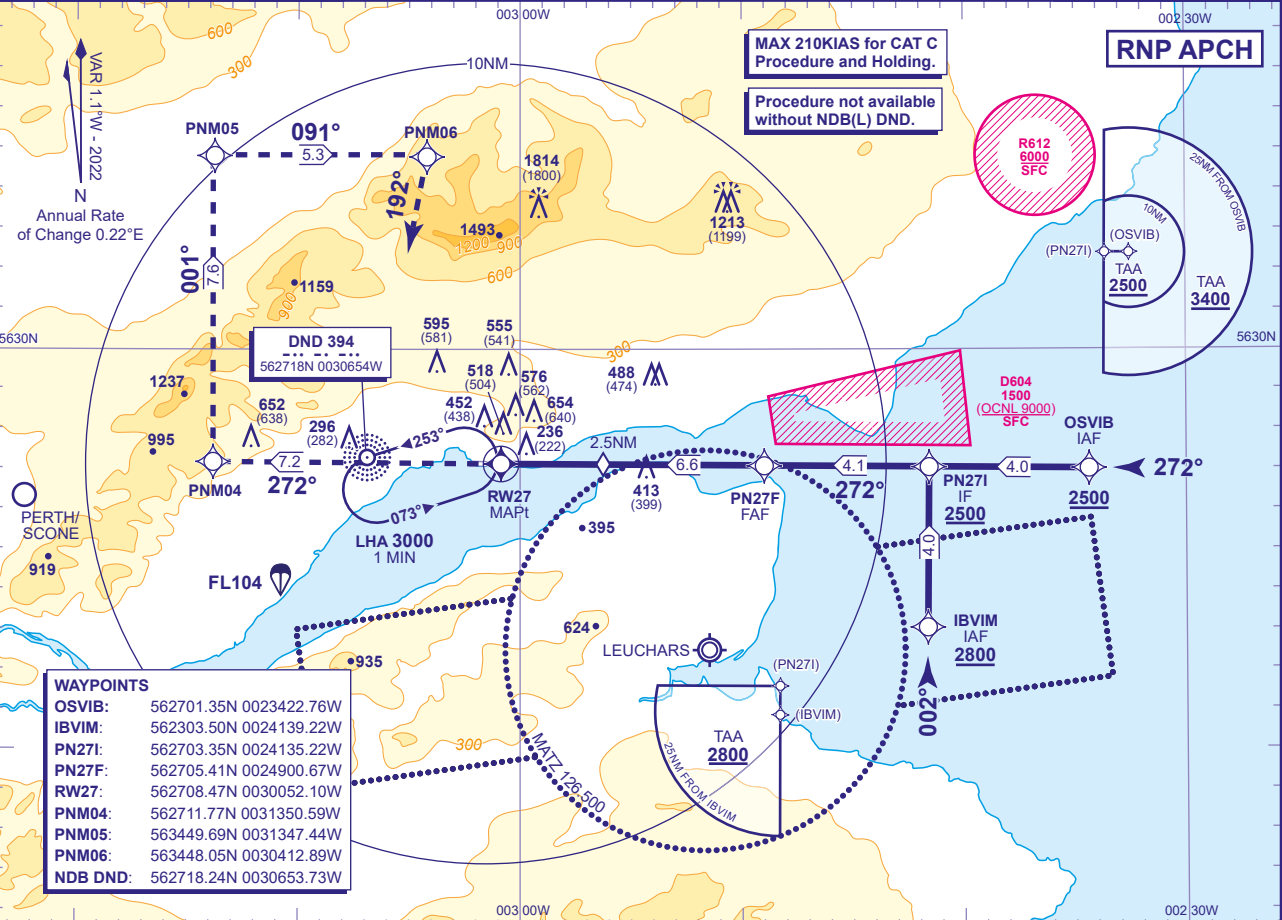
MSA 10NM NDB(L) DND

APP 122.905  
TWR 122.905  
ATIS 119.330

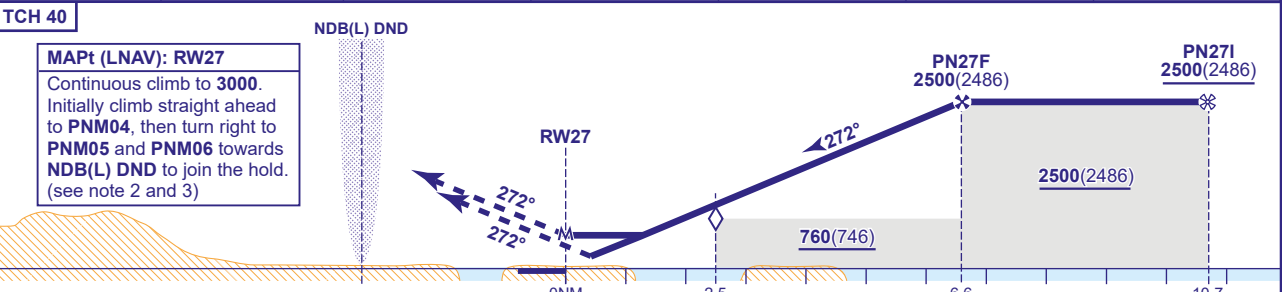
DUNDEE APPROACH  
DUNDEE TOWER  
DUNDEE INFORMATION

AD ELEVATION 17  
THR ELEVATION 14  
OBSTACLE ELEVATION 1814 AMSL (1800) (ABOVE THR)  
BEARINGS ARE MAGNETIC

TRANSITION ALTITUDE 3000



RECOMMENDED PROFILE Gradient 6.12%, 372FT/NM						
NM to MAPt (RW27)	6	5	4	3	2.5 (SDF)	2
ALT(HGT)	2280(2266)	1910(1896)	1540(1526)	1170(1156)	980(966)	800(786)



Aircraft Category		A	B	C	UNIM	2.5	6.6		10.7			
OCA (OCH)	LNAV	680(666)	680(666)	680(666)		Rate of descent	G/S KT	160	140	120	100	80
							FT/MIN	990	870	740	620	500
VM(C)OCA (OCH AAL)	Total Area	970(953)	970(953)	1170(1153)								
	South of RWY 09/27	690(673)	750(733)	1080(1063)								

**NOTE 1** NDB(L) DND is 3.3NM from THR RWY 27 and is offset 230M north of extended RWY C/L.  
**2** Missed approach MAX 185KIAS.  
**3** Missed approach reverts to conventional navigation to hold at NDB(L) DND.